

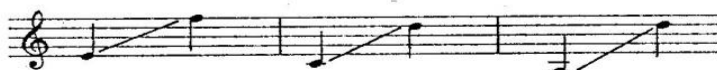
Et In Terra Pax

SSA Chorus and Piano*

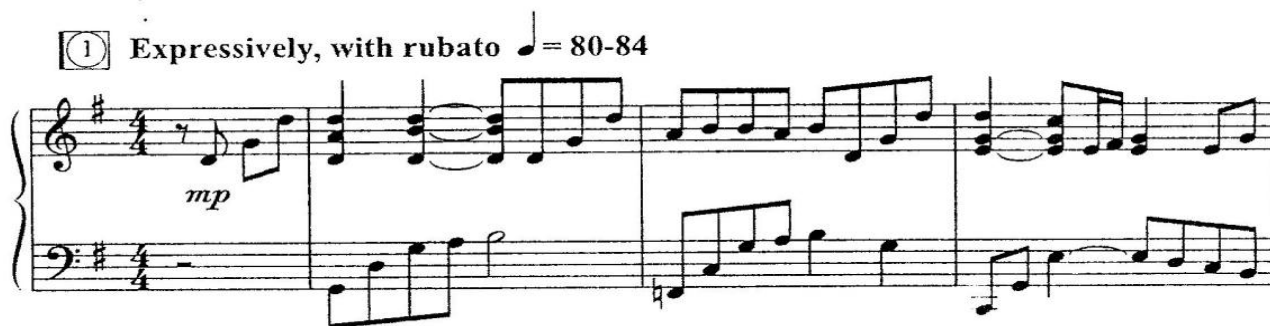
Traditional Latin

Mary Lynn Lightfoot

Ranges: Soprano I Soprano II Alto



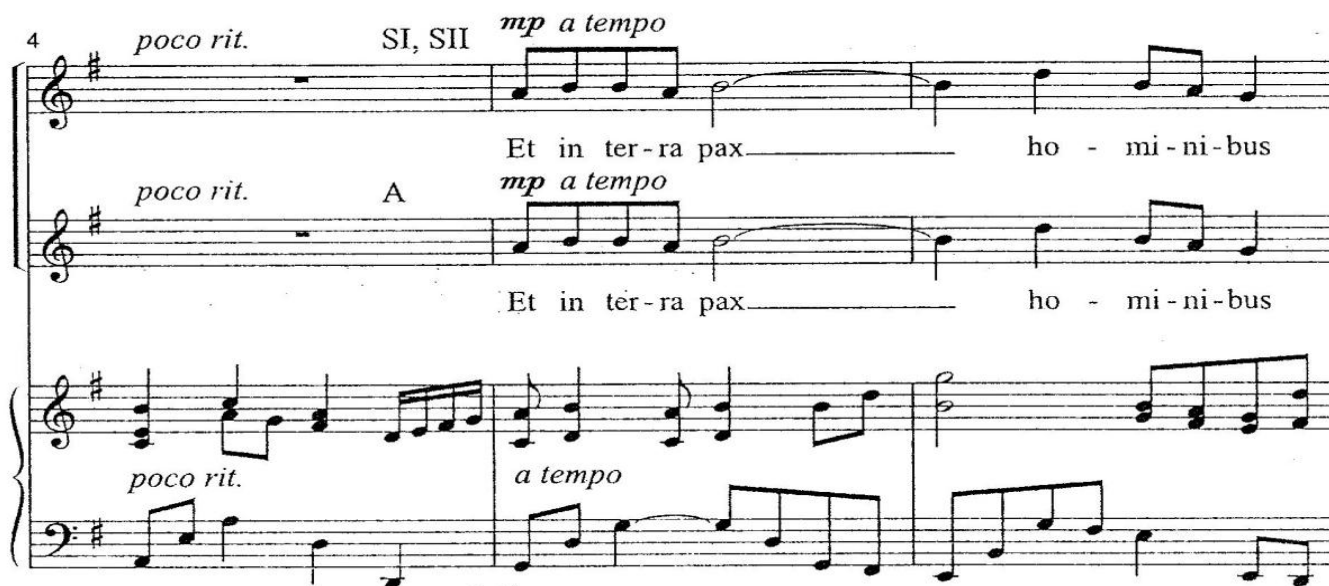
① Expressively, with rubato ♩ = 80-84



4 *poco rit.* SI, SII *mp a tempo* Et in ter-ra pax ho - mi - ni - bus

poco rit. A *mp a tempo* Et in ter-ra pax ho - mi - ni - bus

poco rit. *a tempo*



Duration: approx. 3:00

*Also available: TTB (15/2351H); Three-part Mixed (15/2097H); Two-part (15/2096H);
Performance/Accompaniment CD (99/2270H).

© 2006, This arrangement © 2008 Heritage Music Press, a division of The Lorenz Corporation.
All rights reserved. Printed in U.S.A.

Unauthorized reproduction of this publication is a criminal offense subject to prosecution.
THE CCLI LICENSE DOES NOT GRANT PERMISSION TO PHOTOCOPY THIS MUSIC.

7

bo-nae vo-lun-ta-tis. Et in ter-ra pax

bo-nae vo-lun-ta-tis. Et in ter-ra pax

10

— ho-mi-ni-bus. Pax, et in ter-ra pax ho-mi-ni-

— ho-mi-ni-bus. Pax, et in ter-ra pax ho-mi-ni-

13

bus.

bus.

cresc.

2

16 *mf* SI Et in ter - ra pax

SII *mf* Et in

A *mf* Et in

18 — ho - mi-ni-bus bo-nae vo - lun - ta - tis.

ter - ra pax bo-nae vo - lun - ta - tis.

ter - ra pax bo-nae vo - lun - ta - tis.

21

Et in ter-ra pax ho - mi-ni-bus. Pax, et in ter-ra

Et in ter - ra pax. Pax, et in ter-ra

Et in ter - ra pax. Et in ter - ra

24

3

pax ho - mi - ni - bus.

pax ho - mi - ni - bus.

pax ho - mi - ni - bus.

27 *mp*

Do-mi-ne De - us, gra - ti - as. Gra - ti - as a - gi - mus

mp

Do-mi-ne De - us, gra - ti - as. Gra - ti - as a - gi - mus

mp

Do-mi-ne De - us, gra - ti - as. Gra - ti - as a - gi - mus

mp

30 *cresc.*

ti - bi. Do-mi-ne De - us,

cresc.

ti - bi. Do-mi-ne De - us,

cresc.

ti - bi. Do-mi-ne De - us,

cresc.

33 4 *mf*

Lau - da - mus te. Be - ne - di - ci - mus te. Ad - o - ra - mus te.

mf
Lau - da - mus te.

mf
Lau - da - mus te.

mf

36 *mp cresc. e rit.*

Glo - ri - fi - ca - mus—

mp
Ad - o - ra - mus te. Glo - ri - fi - ca - mus—

mp
Ad - o - ra - mus te. Glo - ri - fi - ca - mus—

mp
cresc. e rit.

39 5 *mf* *mf a tempo*

te. Do-na no - bis pa - cem. Et in ter-ra pax

mf *a tempo* *mf*

te. Do-na no - bis pa - cem. Et in

mf *a tempo* *mf*

te. Do-na no - bis pa - cem. Et in

mf *mf a tempo*

42

— ho - mi-ni-bus bo-nae vo - lun - ta - tis.

ter - ra pax bo-nae vo - lun - ta - tis.

ter - ra pax bo-nae vo - lun - ta - tis.

45

Et in ter-ra pax ho - mi-ni-bus. Pax, et in ter-ra

Et in - ter - ra pax. Pax, et in ter-ra

Et in - ter - ra pax. Et in ter - ra

48

pax ho - mi - ni - bus. Pax, et in ter-ra

pax ho - mi - ni - bus. Pax, et in ter-ra

pax ho - mi - ni - bus. Et in ter - ra

51 6

mp

pax ho - mi - ni - bus. Do-na no - bis, do - na

mp

pax ho - mi - ni - bus. Et in ter - ra pax.

mp

pax ho - mi - ni - bus. Do-na no - bis, do - na

mp

54

cresc.

no - bis pa - cem. Pa - cem, do - na no - bis pa - cem,

cresc.

Et in ter - ra pax. Et in ter - ra pax. Et in ter - ra pax,

cresc.

no - bis pa - cem. Pa - cem, do - na no - bis pa - cem,

cresc.



57 *mf* *rit. e dim.* *mp a tempo*

pa - cem. Et in ter - ra pax.

mf *rit. e dim.* *mp a tempo*

pa - cem. Et in ter - ra, et in ter-ra pax.

mf *rit. e dim.* *mp a tempo*

pa - cem. Et in ter - ra pax.

mf *rit. e dim.* *mp a tempo*

60 *rit.* *p*

Et in ter - ra pax. _____

rit. *p*

Et in ter - ra pax. _____

rit. *p*

Et in ter - ra pax. _____

rit. e dim. *p*